

Simran Tools International

664, Military Road, Anand Parbat, New Delhi – 1100 05 (India).

E-mail : simrantools@vsnl.net

E-mail : info@simrantools.com

Website : www.simrantools.com

Mobile : 91-9313811414

Phone : 91-11-32913249

Fax : 91-11-25861340

ENGINEER'S PRECISION TOOLS

(PART A) MEASURING & MARKING TOOLS

1. Dial Comparator Stand – Fine Adjustment
2. Precision Steel Squares
3. Adjustable Steel Square
4. Adjustable Bevel
5. Steel Parallels
6. Sine Bar Economy
7. Round Bar Centre Finder
8. Centre Square
9. Edge & Centre Finders
10. Wigler & Centre Finder Set
11. Machinist V-Block Set (Tool Maker)
12. Precision V-Block And Clamp Set - Multi Use
13. Precision V-Block And Clamp (Ultimate) All Angles
14. Casted V-Blocks
15. V-Blocks Quadruple
16. Magnetic V-Block
17. Micrometer Economy
18. Micrometer Stand
19. Brass Vernier
20. Vernier Calliper (5" & 6")
21. Steel Rules
22. Spring Calliper And Divider
23. Square Leg Callipers (Quick Release Callipers)
24. Firm Joint Callipers And Dividers
25. Firm Joint Jenny Calliper (Hermaphrodite Calliper)
26. Wing Compass
27. Beam Trammels
28. Scribes
29. Machinist Scrapers
30. Triangular Scrapers
31. Slotted Angle Plates (Webbed & Open)
32. Stepped Angle Plates
33. Solid Angle Plates
34. Right Angle Iron Plates
35. Surface Plates



1. DIAL COMPARATOR STAND - FINE ADJUSTMENT



- Compact and Versatile Comparator Stand.
- Rugged Enamelled Cast Iron base.
- Rust Proof chrome plated Pillar at right angle to the base.
- Hardened and Precise ground Anvil.
- Provided with fine Adjustment Knob for Zero Setting.
- Suitable for all dial gauges including 3/8" and 5/16" dia stem.
- Base Dimension : 6" x 4" (150 x 100mm).
- Pillar diameter : 1" (25.4 mm).
- Supplied without Dial Gauge.

ITEM NO.	DESCRIPTION	ANVIL SIZE		THROAT DEPTH		MEASURING RANGE		FINE ADJUSTMENT	
		INCH	MM	INCH	MM	INCH	MM	INCH	MM
SDF-1130	Round Serrated	2-3/8	60	3	75	5	125	1/8	3
SDF-1131	Round Flat	2-3/8	60	3	75	5	125	1/8	3
SDF-1132	Square Flat	2-3/8	60	3	75	5	125	1/8	3
SDF-1133	Square Serrated	2-3/8	60	3	75	5	125	1/8	3
SDF-1134	Round Serrated	2-3/8	60	3	75	11	280	1/8	3
SDF-1135	Round Flat	2-3/8	60	3	75	11	280	1/8	3
SDF-1136	Square Flat	2-3/8	60	3	75	11	280	1/8	3
SDF-1137	Square Serrated	2-3/8	60	3	75	11	280	1/8	3

2. PRECISION STEEL SQUARES

(Available in 'A' Grade & 'Workshop' Grade)



- Made of Finest quality ground steel with heavy thick stock.
- Blade is hardened and Ground for straightness and Parallelism.
- Squares are accurate both inside and outside.
- Sizes 18" (450mm) and above are supplied in finished wooden box.
- Effective Blade length measured from inner edge of the beam to end of the blade and is approximately 1/4" (6mm) more than sizes shown.

ITEM NO.	EFFECTIVE BLADE LENGTH		STOCK LENGTH	
	INCH	MM	INCH	MM
SPS-1151	1	25	1-1/2	38
SPS-1152	2	50	2	50
SPS-1153	3	75	2-1/2	63
SPS-1154	4	100	3	75
SPS-1155	5	125	3-1/2	89
SPS-1156	6	150	4	100
SPS-1157	8	200	5	125
SPS-1158	9	225	6	150
SPS-1159	10	250	6	150
SPS-1160	12	300	8	200
SPS-1161	18	450	10	250
SPS-1162	24	600	13	330

While Placing Order Please Mention 'A' Grade or 'Workshop' Grade



3. ADJUSTABLE STEEL SQUARES



- Especially used to check squareness in places where conventional squares cannot be used.
- Working faces are hardened and ground.
- Supplied with two blades, one with square ends, the other with a 45 degree on one end and 30 degree on the other end and a 100mm steel rule.
- Easy to operate knurled lock nut for setting the stock in any position.

ITEM. NO.	BLADE LENGTH	
	INCH	MM
SES-1170	4	100
SES-1171	6	150

4. ADJUSTABLE BEVEL



- Blade is blackened.
- For use on inside or outside corners for perfect layout.

ITEM NO.	RANGE	
	INCH	MM
SAB-1175	3-3/4	95
SAB-1176	7-3/4	190
SAB-1177	9-3/16	230
SAB-1178	10	250
SAB-1179	10-3/4	270

5. STEEL PARALLELS

A) STEEL PARALLELS - SETS IN PAIR



- Made from fine quality tool steel, hardened and ground.
- Packed in attractive wooden case.

ITEM NO.	LENGTH (MM)	THICKNESS (MM)	WIDTH OF EACH PAIR							QTY. IN EACH SET
			1 st	2 nd	3 rd	4 th	5 th	6 th	7 th	
SSP-1185	120	8	10	15	20	25	30	35	40	7 pairs
SSP-1186	160	8	10	15	20	25	30	35	40	7 pairs
SSP-1187	200	8	15	20	25	30	35	40	45	7 pairs
SSP-1188	120	4	10	15	20	25	30	35	--	6 pairs
SSP-1189	160	4	10	15	20	25	30	35	40	7 pairs



B) STEEL PARALLELS – PAIRS



ITEM NO.	LENGTH (MM)	THICKNESS (MM)	WIDTH (MM)
SSP-1191	150	6	12
SSP-1192	150	6	19
SSP-1193	150	12	25
SSP-1194	100	5	10
SSP-1195	125	20	10
SSP-1196	150	30	15
SSP-1197	200	40	19
SSP-1198	250	50	25
SSP-1199	A set of 3 pairs containing one pair each of SSP-1191 to SSP-1193		

6. SINE BAR ECONOMY



- Made of Hardened Steel.
- Precision Ground on all sides.
- Moderately priced.

ITEM NO.	WIDTH	DISTANCE BETWEEN ROLLS
SBE-1210	1"	2-1/2"
SBE-1211	1"	5"

7. ROUND BAR CENTRE FINDER



- Accurately and quickly locates center on round workpiece.
- For execution place the tool in drill chuck or collet and line up pointer with line scribed on shaft.
- Supplied with instructions.

ITEM NO.	SHANK DIA		OVERALL LENGTH	
	INCH	MM	INCH	MM
SRB-1215	3/8	9.5	4-1/8	105



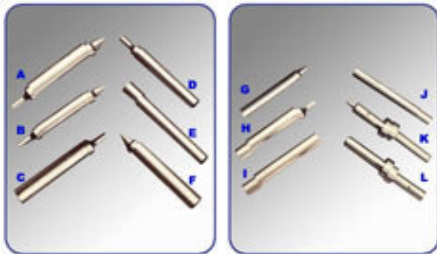
8. CENTRE SQUARE



- Made from Quality Tool Steel.
- Blade Hardened & Tempered.
- Designed for fast and accurate location of the centre of the face of a round bar or disc within the sizes mentioned.
- A useful square for machinist's and tool makers.

ITEM NO.	WORK DIAMETER	
	INCH	MM
SCS-1220	1-1/2	38
SCS-1221	3	75

9. EDGE & CENTRE FINDERS



- Hardened all over and ground on all working surfaces.
- Edge finder works well on round or straight surfaces.
- The centre finder will pick up cross lines to machine drill or bore holes to a layout.

ITEM NO.	TIP DIAMETER	SHANK DIAMETER	TYPE
	MM	MM	
SEF-1231A	5	12	Combination Edge and Centre Finder
SEF-1231B	5	9	Combination Edge and Centre Finder
SEF-1231C	5	12	Edge finder
SEF-1231D	-	9	Edge finder
SEF-1231E	10	-	Edge Finder-Metric
SEF-1231F	-	12	Centre finder
SEF-1231G	-	9	Centre Finder
SEF-1231H	5	12	Double Edge Finder
SEF-1231I	12	12	Plain Edge Finder
SEF-1231J	-	9	Stepped Shank Edge Finder
SEF-1231K	4	10	Edge finder-Metric
SEF-1231L	10	-	Edge finder-Metric

10. WIGLER & CENTRE FINDER SET



- These sets are fast effective way of locating the Working centre on lathes, bench drills and milling machines.
- Hardened steel points and contacts ensure accurate location.
- The four attachments snap fit into the chuck without removing the collet nut and reducing down time. 5 pieces set imperial (Chuck with 4 arms).
- Comes in attractive plastic pouch.

ITEM NO. - SWF-1240



11. MACHINIST V-BLOCK SET (TOOL MAKER)



- Moderately priced.
- Designed for Machine Shop.
- Set Consists of Two V-Blocks and Two Clamps.

ITEM NO.	LENGTH		WIDTH		HEIGHT	
	INCH	MM	INCH	MM	INCH	MM
SMB-1251	1-5/8	40	1-1/4	32	1-1/4	32
SMB-1252	1-3/4	45	1-5/8	40	1-7/16	36
SMB-1253	2	50	1-1/2	37	1-1/2	37
SMB-1254	2-3/8	60	1-5/8	40	2	50
SMB-1255	2-3/4	70	1-3/4	45	1-5/8	40
SMB-1256	3	75	2-3/16	55	2-3/16	55
SMB-1257	3-3/16	80	2-5/8	65	2-5/8	65
SMB-1258	4	100	3	75	3	75

12. PRECISION V - BLOCK & CLAMP SET - MULTI USE



- Multi-Use : Holds both Square and Round Work.
- Stepped Groove Construction permits both Low and High Clamping.
- Side Hole-Provided in each block to facilitate clamping.
- Made of Hardened Tool Steel, Machined and Ground in Pairs.
- All Sides Precision Ground Parallel and Square to an accuracy of 0.0003".
- Set Consists of Two V-Blocks and Two Clamps.
- Capacity : 2" (50 mm) Round and 1-7/16" (36.5 mm) Square.

ITEM NO.	LENGTH		WIDTH		HEIGHT	
	INCH	MM	INCH	MM	INCH	MM
SPB-1265	2-3/8	60	2-3/4	70	2	50

13. PRECISION V-BLOCK & CLAMP (ULTIMATE) ALL ANGLES



- Ultimate V-Block for Grinding, Milling or Drilling work.
- Made of hardened and Precision ground tool steel.
- The sides are parallel and vee is central and ground.
- Central Hole is provided for Drilling or removing Pins.
- Clamp is smaller than outside width of the V-Block and has adjustable side screw for support.
- V-Block has four 3-8/16 tapped holes two in the base and one on each side for angle Iron clamping.
- Block is provided with black oxidized clamp.
- Holding Capacity 1-5/16" (33 MM).

CLAMP SINGLE	CLAMP PAIR	LENGTH		WIDTH		HEIGHT	
ITEM NO.	ITEM NO.	INCH	MM	INCH	MM	INCH	MM
SCU-1270	SCU-1271	3-5/8	92	1-7/8	48	1-7/8	48



14. CASTED V-BLOCKS



- Supplied in Machined and Numbered pairs.
- Made of High Quality Seasoned Castings.
- Blocks are accurately Ground Square and Parallel.

ITEM NO.	LENGTH		HEIGHT		THICKNESS OF EACH BLOCK		WIDTH OF VEE	
	INCH	MM	INCH	MM	INCH	MM	INCH	MM
SCV-1281	2	50	1-1/4	32	1	25	1	25
SCV-1282	3	75	2-3/8	60	1-1/4	32	1-3/4	45
SCV-1283	4	100	2-5/8	65	1-5/8	40	2	50
SCV-1284	5	125	3-1/8	80	2	50	2	50
SCV-1285	6	150	3-1/2	90	2-1/2	63	3-1/4	82
SCV-1286	7	175	4-1/2	115	3	75	3-1/2	90
SCV-1287	8	200	5-1/2	140	4	100	4	100
SCV-1288	10	250	6-5/8	168	5	125	5	125
SCV-1289	12	300	8	200	7	180	6-1/2	165

15. V-BLOCKS QUADRUPLE



- Made from seasoned closed grained cast Iron.
- Universal V-Block consisting of Four different size grooves.
- Supplied in Pairs.

ITEM NO.	LENGTH		HEIGHT		THICKNESS		WIDTH OF VEE	
	INCH	MM	INCH	MM	INCH	MM	INCH	MM
SBQ-1301	3-3/4	95	2-3/4	70	1-3/8	35	3/4x1-3/16x 1-9/16 x 2	20x30x 40x50
SBQ-1302	4	100	4	100	1-3/16	30	3/4x1-3/16x 1-9/16x2	20x30x 40x50
SBQ-1303	4-3/4	120	4-3/4	120	1-3/8	35	1-3/16x1-9/16x 2x2-3/8	30x40x 50x60
SBQ-1304	4-3/4	120	4-3/4	120	2-3/8	60	1-3/16x1-9/16 x2x2-3/8	30x40x 50x60
SBQ-1305	6	150	6	150	3	75	1-9/16x2x2-3/8x 2-3/4	40x50x 60x70
SBQ-1306	8	200	8	200	4	100	2-3/8x2-3/4x 3-5/32x4	60x70x80x100



16. MAGNETIC V-BLOCK



- All working surfaces are precision ground.
- Ideal for holding, inspection and light Machining.
- Accuracy of Vee is within 0.0003" (0.007 mm).
- A powerful, permanent magnet is controlled by Rotary ON/OFF Switch.
- Supplied in fine finished wooden Box.

ITEM NO.	LENGTH		WIDTH		HEIGHT		BIG V		SMALL V	
	INCH	MM	INCH	MM	INCH	MM	INCH	MM	INCH	MM
SMV-1315 (Single)	2-3/4	70	2-1/8	54	2-7/8	73	1-1/2	38	3/4	19
SMV-1316 (Single)	4	100	2-3/4	70	3-3/4	95	2	50	3/4	19
SMV-1317 (Pair)	4	100	2-3/4	70	3-3/4	95	2	50	3/4	19
SMV-1318 (Single)	6	150	3	75	3-3/4	95	2-1/4	55	1	25

17. MICROMETER ECONOMY



- Available in Metric and Inch sizes.
- Best for hobbyists and for general use.
- Very handy tool for measuring.

ITEM NO.	RANGE
SME-1330	0-1"
SME-1331	0-25 m.m.

18. MICROMETER STAND



- An indispensable clamping device for precise and stand measurements.
- Most useful to speed up production and quality inspection.
- Provides desirable measuring position and angle for measurement.
- Allows clamping and positioning of the micrometer with a single clamp.

ITEM NO. - SMM-1333

19. BRASS VERNIER



- Stepped Jaw Construction for inside and outside measurement.
- Graduated in metric and Inch sizes.
- Made of Brass.

ITEM NO.	MEASURING RANGE	
	INCH	MM
SBV-1340	0 – 3	0 – 75
SBV-1341	0 – 4	0 – 100



20. VERNIER CALLIPER (5" & 6")



- Handy tool for Inside, Outside and depth measurement.
- Columbus Type features Thumb controlled movement with locking device.
- Graduated in both Inch and MM size.

ITEM NO.	RANGE		DESCRIPTION
	INCH	MM	
SVN-1344	0-5	0-125	Columbus Type
SVN-1345	0-6	0-150	Columbus Type

21. STEEL RULES



- Made from Stainless Steel.
- Etched Fine Black Graduations.
- Rules for every one.

ITEM NO.	TYPE	GRADUATION
SSR-1351	6" Pocket Rule	In inches 32nd 64ths
SSR-1352	6" Pocket Rule	In inches and m.m.
SSR-1353	6" Rule	In inches and m.m.
SSR-1354	12" Rule	In inches and m.m.
SSR-1355	24" Rule	In inches and m.m.
SSR-1356	36" Rule	In inches and m.m.

22. SPRING CALLIPER & DIVIDER



- All Dividers and Calipers are made of high grade polished steel.
- Legs are well finished and balanced.
- Spring is hardened and tempered.
- Solid Nut and washer permits fast and positive adjustment.
- Heat treated points to give accurate measurement.

DIVIDER	INSIDE CALLIPER	OUTSIDE CALLIPER	NORMAL SIZE	
ITEM NO.	ITEM NO.	ITEM NO.	INCH	MM
SCD-1365	SCD-1375	SCD-1385	3	75
SCD-1366	SCD-1376	SCD-1386	4	100
SCD-1367	SCD-1377	SCD-1387	6	150
SCD-1368	SCD-1378	SCD-1388	8	200
SCD-1369	SCD-1379	SCD-1389	10	250
SCD-1370	SCD-1380	SCD-1390	12	300
SCD-1371	SCD-1381	SCD-1391	18	450
SCD-1372	SCD-1382	SCD-1392	24	600
SCD-1373	SCD-1383	SCD-1393	36	900
SCD-1374	SCD-1384	SCD-1394	3PC Set of 4" (100 mm), 6" (150 mm) and 8" (200 mm)	



23. SQUARE LEG CALLIPERS (Quick Release Callipers)



- Square Lays.
- Points are Hardened.

DIVIDER	INSIDE CALLIPER	OUTSIDE CALLIPER	SIZE	
ITEM NO.	ITEM NO.	ITEM NO.	INCH	MM
SCD-1405	SCD-1415	SCD-1425	6	150
SCD-1406	SCD-1416	SCD-1426	8	200
SCD-1407	SCD-1417	SCD-1427	10	250

24. FIRM JOINT CALLIPER & DIVIDER



- Legs machined to rigid and balance.
- Polish finish.

DIVIDER	INSIDE CALLIPER	OUTSIDE CALLIPER	SIZE	
ITEM NO.	ITEM NO.	ITEM NO.	INCH	MM
SCD-1435	SCD-1445	SCD-1455	6	150
SCD-1436	SCD-1446	SCD-1456	8	200
SCD-1437	SCD-1447	SCD-1457	10	250
SCD-1438	SCD-1448	SCD-1458	12	300

25. FIRM JOINT JENNY CALLIPER (HERMAPHRODITE CALLIPER)



- Used in layout works for locating and testing centers.
- Properly shaped and finished legs.

ITEM NO.	SIZE	
	INCH	MM
SHC-1461	4	100
SHC-1462	6	150
SHC-1463	8	200



26. WING COMPASS



- High quality thick Dividers.
- Square legs for balance and grip.
- Hardened and Ground Points.
- Manufactured with Rivet or Screw Hinge.

RIVET JOINT		SCREW HINGE		NORMAL SIZE	
ITEM NO.		ITEM NO.		INCH	MM
SWC-1471		SWC-1481		6	150
SWC-1472		SWC-1482		8	200
SWC-1473		SWC-1483		10	250
SWC-1474		SWC-1484		12	300
SWC-1475		SWC-1485		16	400
SWC-1476		SWC-1486		20	500

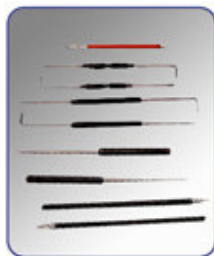
27. BEAM TRAMMEL



- A useful instrument for draftsmen.
- Tool makers and Machinists with fine adjustments for accurate layout work.

ITEM NO.	BEAM SIZE		SCRIBES SIZE	
	INCH	MM	INCH	MM
SBT-1501	10-1/2	265	18	450
SBT-1502	14-1/2	365	26	650
SBT-1503	20	500	36	900

28. SCRIBERS





ITEM NO.	TOTAL LENGTH		SPECIFICATIONS	APPLICATION
	INCH	MM		
SSR-1511	4	100	Pointed at one end & knife edge at opposite end	Marking & scarring
SSR-1512	6-3/4	170	Knurled body, pointed at one end and knife edge at opposite end	Marking & scarring
SSR-1513	10	250	Pointed at one end & knife edge at opposite end	Marking & scarring
SSR-1514	4-1/2	114	Single ended light duty scriber with knurled body	General Marking Jobs
SSR-1515	7	175	Single ended scriber with knurled body	General marking jobs
SSR-1516	7-1/2	190	Single ended heavy duty	Marking & scarring
SSR-1517	6	150	Scriber with 12 interchangeable Alloy Steel Pins	Marking & scarring
SSR-1518	4	105	Scribers with hardened steel reversible point	Light marking in confined spaces
SSR-1519	7-1/2	190	Double ended scriber with knurled body	Marking & scarring
SSR-1520	9	230	Double ended heavy duty scriber with knurled body	Heavy marking jobs in confined spaces, grooves etc.

29. MACHINIST SCRAPERS



- Extremely useful accessory for scraping, made of hardened and tempered steel.
- Available in Triangular, Flat and Half Round shapes.
- With fine quality wooden handles.

ITEM NO.	STYLES	SIZE	
		INCH	MM
SMC-1531	Triangular	4	100
SMC-1532	Flat	4	100
SMC-1533	Half Round	4	100
SMC-1534	Triangular	6	150
SMC-1535	Flat	6	150
SMC-1536	Half Round	6	150
SMC-1537	Triangular	8	200
SMC-1538	Flat	8	200
SMC-1539	Half Round	8	200
SMC-1540	Triangular	10	250
SMC-1541	Flat	10	250
SMC-1542	Half Round	10	250



30. TRIANGULAR SCRAPERS



- Very popular small tool. Useful for scraping, trimming and deburring metals, tubing and other material.
- Hardened and Tempered Tripple edge Blade is secured in wooden handle with steel ferrule.
- Available with Solid Cutting Edge as well as Hollow Ground Cutting Edges.

ITEM NO.	DESCRIPTION
STS-1551	Hollow Ground Cutting Edges
STS-1552	Solid Cutting Edges

31. SLOTTED ANGLE PLATES (WEBBED & OPEN)



- Made of high Quality Seasoned Castings.
- Precision ground sides & ends.
- Available both in open End and Webbed End Styles.

WEBBED END ITEM NO.	OPEN END ITEM NO.	LENGTH		WIDTH (FIRST ANGLE)		HEIGHT (SECOND ANGLE)	
		INCH	MM	INCH	MM	INCH	MM
SSA-1561	-	3	75	2-1/2	63	2	50
SSA-1562	-	3-1/2	90	3	75	2-1/2	63
SSA-1563	SSA-1573	4-1/2	115	3-1/2	90	3	75
SSA-1564	SSA-1574	6	150	5	125	4-1/2	115
SSA-1565	SSA-1575	7	175	5-1/2	140	4-1/2	115
SSA-1566	SSA-1576	8	200	6	150	5	125
SSA-1567	SSA-1577	9	225	7	175	6	150
SSA-1568	SSA-1578	10	250	8	200	6	150
SSA-1569	SSA-1579	12	300	9	225	8	200

32. STEPPED ANGLE PLATE

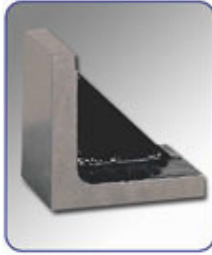


- Made from EN-31 Steel.
- Hardened and ground.
- Tapped holes for clamping jobs in any position.
- Stepped construction.
- Flatness and squareness to within 0.002" per 6".

ITEM NO.	SIZE	
	INCH	MM
SPL-1589	3 x 3 x 3	75 x 75 x 75
SPL-1590	4 x 4 x 4	100 x 100 x 100



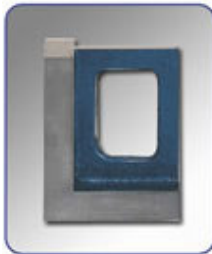
33. SOLID ANGLE PLATES



- Made from High quality Casting.
- Castings are properly seasoned to avoid distortion.
- Precision ground sides and Ends.
- Flatness and Squareness within .002" Per 6" for Machined finish and .001" per 6" for Ground finish.

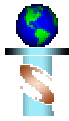
MACHINED FINISH ITEM NO.	PRECISION GROUND FINISH ITEM NO.	NO. OF RIBS	SIZE	
			INCH	MM
SAG-1601	SAG-1611	0	1 x 1 x 1	25 x 25 x 25
SAG-1602	SAG-1612	1	2 x 2 x 2	50 x 50 x 50
SAG-1603	SAG-1613	1	3 x 3 x 3	75 x 75 x 75
SAG-1604	SAG-1614	1	4 x 4 x 4	100 x 100 x 100
SAG-1605	SAG-1615	1	5 x 5 x 5	125 x 125 x 125
SAG-1606	SAG-1616	1	6 x 6 x 6	150 x 150 x 150
SAG-1607	SAG-1617	2	8 x 8 x 8	200 x 200 x 200
SAG-1608	SAG-1618	2	10 x 10 x 10	250 x 250 x 250
SAG-1609	SAG-1619	2	12 x 12 x 12	300 x 300 x 300

34. RIGHT ANGLE IRON PLATES



- Used for fixture component and checking Squareness and Parallelism.
- Side ends and faces are finished Square and Parallel within .002" per 6".

ITEM NO.	DIMENSIONS (LENGTH x WIDTH x HEIGHT)	
	INCH	MM
SRA-1631	3-3/4 x 4 x 5	95 x 100 x 125
SRA-1632	4 x 4 x 6	100 x 100 x 150
SRA-1633	4-1/2 x 5 x 6	114 x 125 x 150
SRA-1634	4-1/2 x 5 x 8	114 x 125 x 200
SRA-1635	5 x 8 x 12	125 x 200 x 300
SRA-1636	5-1/2 x 7 x 10	139 x 175 x 250
SRA-1637	5-1/2 x 8 x 10	139 x 200 x 250
SRA-1638	6 x 6 x 8	150 x 150 x 200
SRA-1639	8 x 10 x 12	200 x 250 x 300
SRA-1640	8 x 9 x 16	200 x 225 x 400
SRA-1641	12 x 12 x 24	300 x 300 x 600



35. SURFACE PLATE



A. Cast Iron

Made from High Quality close grained cast iron, stress relieved against distortion. Precisely finished by planing and hand scraping.

B. Granite

Made out of selected black granite having uniform texture and colour. Very dense and hard wearing. Non-Magnetic non glaring, economical, lesser wear, no oiling, no rust.

CAST IRON			GRANITE		
ITEM NO.	INCH	MM	ITEM NO.	INCH	MM
SFP-1651	12" x 12"	300 x 300	SFP-1661	12" x 12"	300 x 300
SFP-1652	16" x 16"	400 x 400	SFP-1662	16" x 16"	400 x 400
SFP-1653	16" x 24"	400 x 630	SFP-1663	16" x 24"	400 x 630
SFP-1654	24" x 24"	630 x 630	SFP-1664	24" x 24"	630 x 630
SFP-1655	24" x 40"	630 x 1000	SFP-1665	24" x 40"	630 x 1000
SFP-1656	40" x 40"	1000 x 1000	SFP-1666	40" x 40"	1000 x 1000
SFP-1657	40" x 64"	1000 x 1600	SFP-1667	40" x 64"	1000 x 1600
SFP-1658	40" x 80"	1000 x 2000	SFP-1668	40" x 80"	1000 x 2000