



Simran Tools International

664, Military Road, Anand Parbat, New Delhi – 1100 05 (India).

E-mail : simrantools@vsnl.net

E-mail : info@simrantools.com

Website : www.simrantools.com

Mobile : 91-9313811414

Phone : 91-11-32913249

Fax : 91-11-25861340

INDUSTRIAL TOOLS / MACHINE TOOL ACCESSORIES

(PART D) MAGNETIC AND DRESSING TOOLS

1. **Magnetic Base (Push Button & High Power)**
2. **Mini Magnetic Stand**
3. **Magnetic Chucks**
4. **Magnetic V-Block**
5. **Magnetic Quick Clamp**
6. **Magnetic Adjustable Links**
7. **Pot Magnet**
8. **Single Point Diamond Dresser**
9. **Diamond Dressers With Knurled Body**
10. **Hi-Low Adjustable Dressers**
11. **Low-Bay Angle Dresser**
12. **Wheel Dresser**

1. MAGNETIC BASE

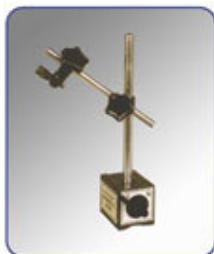
(A) Magnetic Base – Push Button



- Provided with ON/OFF Push Button.
- Specially designed to use with Dial Gauges, to work on surface plate and Machine Tables.
- Magnetic Pull on base and two sides.
- Magnetic Pull 25 kg (55 Lbs) approximately.

ITEM NO.	OVERALL HEIGHT		BASE DIMENSIONS	
	INCH	MM	INCH	MM
SMP-0980	9-1/4	235	1-7/8 x 1-3/4 x 2	48 x 45 x 50

(B) Magnetic Base – High Power



- With ON / OFF Switch.
- Horizontal or vertical positioning capability.
- V - Grooved base for mounting on cylindrical parts.
- Magnetic pull approx. 50 - 60 Kg. (110-130 Lbs).

ITEM NO.	OVERALL HEIGHT		BASE DIMENSIONS	
	INCH	MM	INCH	MM
SMH-0985	9-1/2	240	2-1/2x1-7/8x2-1/8	63 x 48 x 55
SMH-0985 FINE ADJUSTMENT	9-1/2	240	2-1/2x1-7/8x2-1/8	63 x 48 x 55



2. MINI MAGNETIC STAND

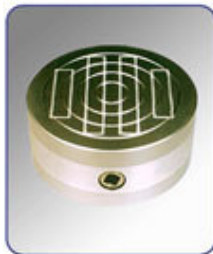


- Compact and universal permanent magnetic stand.
- High magnetic power for maximum rigidity.
- Includes disc on bottom for neutralizing magnet when not in use.

ITEM NO.	BASE DIA		TOTAL HEIGHT	
	INCH	MM	INCH	MM
SMM-0990	1-1/8	28	5	125

3. MAGNETIC CHUCKS

(A) Magnetic Chucks – Round



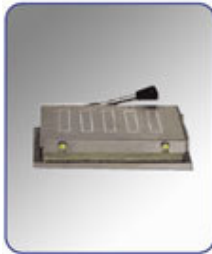
- High Powered Chucks.
- Solid Top and Bottom Plates assure retained accuracy.
- Full loading power over entire plates.
- Pole Divisions are arranged for holding Small, Thin and Large pieces.
- Available in Standard Poles & Straight.

ITEM NO.	SIZE	
	INCH	MM
SMC-1000	3	75
SMC-1001	4	100
SMC-1002	5	125
SMC-1003	6	150
SMC-1004	8	200
SMC-1005	9	225
SMC-1006	10	250
SMC-1007	12	300
SMC-1008	15	380
SMC-1009	16	405
SMC-1010	18	455
SMC-1011	20	505

While Placing Order Please Mention Standard Poles or Straight



(B) Magnetic Chucks – Rectangular



- **High Powered Chucks.**
- **Solid Top and Bottom Plates** assure retained accuracy.
- **Full loading power** over entire plates.
- **Has a positive hand release.**
- **Pole Divisions** are arranged for holding Small, Thin and Large pieces.
- **Available in Standard Poles & Straight.**

ITEM NO.	SIZE	
	INCH	MM
SMC-1015	4 x 7	100 x 175
SMC-1016	4 x 8	100 x 200
SMC-1017	5 x 10	125 x 250
SMC-1018	6 x 12	150 x 300
SMC-1019	6 x 14	150 x 355
SMC-1020	6 x 18	150 x 455
SMC-1021	8 x 12	200 x 300
SMC-1022	8 x 15	200 x 380
SMC-1023	8 x 18	200 x 455
SMC-1024	8 x 24	200 x 610
SMC-1025	8 x 20	200 x 505
SMC-1026	12 x 24	300 x 610

While Placing Order Please Mention Standard Poles or Straight

4. MAGNETIC V BLOCK



- **Ideal for holding Round or Irregular Shapes** for Scribing, Grinding, Measuring and Machining.
- **Powerful holding force.**
- **Fixed ON / OFF switch.**

ITEM NO.	LENGTH		WIDTH		HEIGHT	
	INCH	MM	INCH	MM	INCH	MM
SVB-1040	4	100	2-3/4	70	3-3/4	95
SVB-1041	4	100	3	75	3-3/4	95
SVB-1042 (PAIR)	4	100	3	75	3-3/4	95
SVB-1043	3-3/16	80	2-3/8	60	3-3/4	95
SVB-1044 (PAIR)	3-3/16	80	2-3/8	60	3-3/4	95

5. MAGNETIC QUICK CLAMP



- **Designed to enable fast and accurate holding** of ferrous metals for Welding and Assembly.
- **Size 4" x 2-5/8" (110 M.M. x 65 M.M.).**
- **Jobs 30°, 45°, 60°, 75°, 90°.**

ITEM NO. – SQC-1046



6. MAGNETIC ADJUSTABLE LINKS



- Widely used for Holding and Welding.
- Can be set at any angle by adjustment and locking of wing nut.
- Each Block is 2" x 1" x 1". Overall Length 4-5/8" and Overall Width 2".

ITEM NO. - SAL-1053

7. POT MAGNET



- Has unlimited applications, such as Magnetic Fasteners, Holding Maps etc.
- Has taped hole of 1/4" (20 TPI).
- Comes with Plated Keepers.

ITEM NO.	DIAMETER		HEIGHT		PULL
	INCH	MM	INCH	MM	
SPM-1060	11/16	14	5/8	16	6 Lbs.
SPM-1061	13/16	20	3/4	19	10 Lbs.
SPM-1062	1-1/16	27	1	25	18 Lbs.
SPM-1063	1-3/8	35	1-3/16	30	25 Lbs.

8. SINGLE POINT DIAMOND DRESSER



- High quality Diamonds.
- Available in Shank sizes 1/4", 3/8", 7/16", 1/2" and Overall Length 1-1/2" to 6".
- Ideal tool for dressing wheels for Surface Grinders, Universal Grinders, Cylindrical Grinders, Centreless Grinders etc.
- Carat Sizes 1/4, 1/3, 1/2, 3/4, 1, 1-1/4, 1-1/2, 2, 2-1/2, 3, 3-1/2, 4 & 5.

ITEM NO. - SPD-1070

9. DIAMOND DRESSERS WITH KNURLED BODY



- High quality diamonds. Available in up to 1/2" Shank Dia x up to 8" Overall Length.
- Carat Sizes 1/4, 1/3, 1/2, 3/4, 1, 1-1/4, 1-1/2, 2, 3, 3-1/2, 4 & 5.

ITEM NO. - SDD-1072



10. HI-LOW ADJUSTABLE DRESSER



- Designed for use on all Grinding Machines.
- Dress O.D. and face of Wheels.
- Adjustable to 7" (175 mm) Height.
- Dress any Width.
- Rugged construction.
- Includes Diamond Dresser: 3/8" (9.5 mm) x 3" (75 mm) (1/4 Carat).

ITEM NO.	DESCRIPTION
SHL-1080	Complete, with Diamond Dresser
SHL-1081	Replacement Diamond Dresser only 3/8" (9.5 mm) x 3" (75 mm) (1/4 Carat)

11. LOW-BOY ANGLE DRESSER



- Designed for use on all Grinding Machines.
- Base Angle Plate is Heavy, Precision Ground, Square on all six sides to an accuracy of .0005".
- Side Block Pivots on Hardened Shoulder Screws.
- Includes Diamond Dresser 3/8" (9.5 mm) x 2" (50 mm) (1/4 Carat).

ITEM NO.	DESCRIPTION
SLB-1084	Complete, with Diamond Dresser
SLB-1085	Replacement Diamond Dresser only 3/8" (9.5 mm) x 2" (50 mm) (1/4 Carat)

12. WHEEL DRESSERS



- Sturdy construction.
- Made of cast Iron.
- Must for every industry.

ITEM NO.	DESCRIPTION
SWD-1091	No. 0 for wheels up to 10" Dia. x 2"
SWD-1092	No. 1 for wheels up to 15" Dia. x 3"
SWD-1093	No. 2 for higher sizes wheels.
SWD-1094	Spare cutter for No. 0 Dresser.
SWD-1095	Spare cutter for No. 1 Dresser.
SWD-1096	Spare cutter for No. 2 Dresser